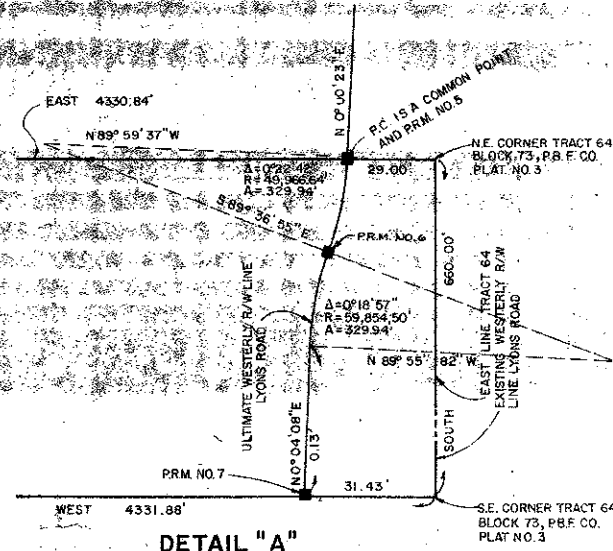


SPANISH ISLES PLAT II

LYING IN SECTION 6, TOWNSHIP 47 SOUTH, RANGE 42 EAST, PALM BEACH COUNTY, FLORIDA
 BEING A REPLAT OF A PORTION OF PALM BEACH FARM COMPANY PLAT NO. 3, PLAT BOOK 2
 PAGES 45 - 54, INCLUSIVE, AS FOUND AMONG THE PUBLIC RECORDS OF PALM BEACH COUNTY, FLORIDA
 (A CERTAIN 30 FOOT WIDE ROAD RIGHT-OF-WAY THEREIN BEING VACATED
 IN OFFICIAL RECORD BOOK 2909, PAGE 1305.)
 MARCH, 1979

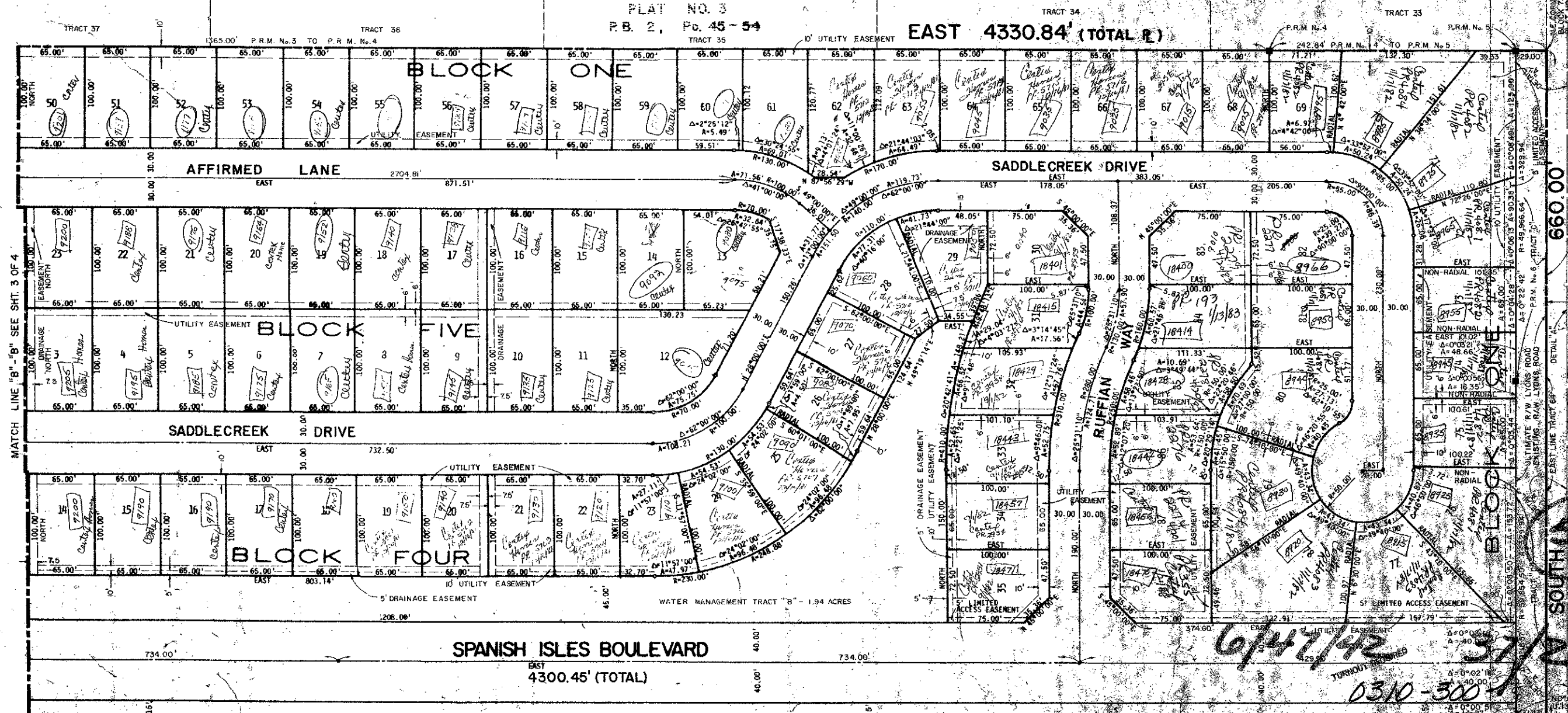


DETAIL "A"

NOTE: THIS DETAIL IS NOT DRAWN TO SCALE AND HAS BEEN EXAGGERATED TO SHOW THE RELATIONSHIP OF THE LARGE RADII CURVES TO THE PLAT.

PALM BEACH FARMS COMPANY
 PLAT NO. 3
 P.B. 2, Pgs. 45 - 54

SHEET 4 OF 4



MATCH LINE "B" - SEE SHT. 3 OF 4

660.00' SOUTH 53° 37' 12" WEST 371.23' (TOTAL R.)

SPANISH ISLES BOULEVARD
 EAST 4300.45' (TOTAL)

NORTHERLY RIGHT-OF-WAY LINE L.W.D. LATERAL CANAL L-41 WEST 4331.88' (TOTAL R.) SOUTHERLY RIGHT-OF-WAY LINE



E.D.M. SURVEYING & MAPPING, INC.
 1000 S. PALM BEACH BLVD., SUITE 100
 PALM BEACH, FLORIDA 33480
 (407) 851-1111

STATE OF FLORIDA
 COUNTY OF PALM BEACH
 THIS PLAT WAS FILED FOR
 RECORD AT
 THE CLERK'S OFFICE OF
 PALM BEACH COUNTY, FLORIDA
 ON 03/15/79 BY
 JOHN W. BRYANT, JR.
 CIRCUIT COURT

6/4/79
 0310-300